

Meopham School

Mental Health Policy



Equalities Statement

In our Trust we work to ensure that there is equality of opportunity for all members of our community who hold a range of protected characteristics as defined by the Equality Act 2010, as well as having regard to other factors which have the potential to cause inequality, such as socio-economic factors. For further information, please see our Equalities Policy.

| | |
|---------------------|----------------------|
| Date of Approval | June 2025 |
| Date of Next Review | July 2026 |
| Approved By | Local Governing Body |

Contents

| | |
|---|------------|
| 1. Introduction | Page 2 |
| 2. Teaching about Mental Health | Page 3 |
| 3. Warning Signs | Page 3 |
| 4. Managing Concerns | Page 4 |
| 5. Confidentiality | Page 4 |
| 6. Individual Risk Reduction Plans | Page 4 |
| 7. Signposting | Page 5-6 |
| 8. In House Mental Health and Wellbeing | Page 7 |
| 9. Working with Parents/Carers | Page 7 |
| 10. Working with other Agencies | Page 8 |
| 11. Supporting Peers | Page 8 |
| 12. Training | Page 8 |
| 13. Policy Review | Page 8 |
| Annex A | Pages 9-11 |

1. Introduction

At Meopham Secondary School, we are committed to supporting the mental health and wellbeing of our students and staff. Our culture is supportive, caring, and respectful. We encourage students to be open and we want each student to have their voice heard.

We know that everyone experiences different life challenges, and that each of us may need help to cope with them sometimes. We understand that anyone and everyone may need additional emotional support. At our school, positive mental health is everybody's responsibility. We all have a role to play.

Implementing an effective whole school approach to mental health is beneficial not only to the wellbeing of pupils and staff, but can also help foster readiness to learn. It may also result in improved attainment, attendance, reductions in behavioural problems, as well as happier, more confident and resilient pupils.

Scope

This document describes the school's approach to promoting positive mental health and wellbeing. This policy is intended as guidance for all staff (including non-teaching staff) as well as governors and parents.

This policy should be read in conjunction with our supporting pupils with medical conditions policy (internal policy) in cases where a student's mental health overlaps with or is linked to a medical issue and the SEND and Inclusion Policy where a student has an identified special educational need and our Child Protection and Safeguarding Policy.

The Policy Aims to:

- Promote positive mental health in all staff and students
- Increase understanding and awareness of common mental health issues
- Alert staff to early warning signs of mental ill health
- Provide support to staff working with young people with mental health issues
- Provide support to students suffering mental ill health and their peers and parents or carers.

Lead Members of Staff:

Whilst all staff have a responsibility to promote the mental health of students, the mental health wellbeing team consists of: Mrs Clements (Assistant Headteacher / Lead DSL), Mrs Trueman (SENCO / DDSL) and Mrs Jarvis (Senior Safeguarding Officer / DDSL.)

Any member of staff who is concerned about the mental health or wellbeing of a student should follow the normal child protection procedures by speaking to a member of the Designated Safeguarding Team and logging a safeguarding concern on CPOMS.

If the student presents a medical emergency then the normal procedures for medical emergencies should be followed, including alerting the first aid staff and contacting emergency services if necessary.

Where a referral to an outside agency is appropriate, this will be led by a DDSL and managed by Mrs Jarvis (Senior Safeguarding Officer) and Mrs Clements (Lead DSL).

2. Teaching about Mental Health

The skills, knowledge and understanding needed by our students to keep themselves and others physically and mentally healthy and safe are included as part of our Personal Development and Character curriculum but are also featured wherever possible as detailed in our whole school cross curricular map.

The specific content of lessons will be determined by the specific needs of the cohort we're teaching but there will always be an emphasis on enabling students to develop the skills, knowledge, understanding, language and confidence to seek help, as needed, for themselves or others. Key topics included in the curriculum are: types of mental health, the effect of mental health on young people, discrimination, how celebrities deal with mental health, coping mechanisms to deal with mental health struggles, stigmas around mental health, how mental health can be affected in relationships (family, friends, forced marriages, grooming, LGBTQ+), body image expectation vs reality, how the media influences body image, eating disorder, how COVID had affected the mental health of teenagers and adults and how changes in their lives as teenagers can affect their mental health.

3. Warning Signs

School staff may become aware of warning signs which indicate a student is experiencing mental health or emotional wellbeing issues. These warning signs should always be taken seriously and staff observing any of these warning signs should communicate their concerns via logging a safeguarding concern on CPOMS and/or speaking to a DDSL. This concern will be actioned by the Deputy Designated Safeguarding Lead for that pupil's year group and quality assured by the Lead DSL.

Possible warning signs include:

- Physical signs of harm that are repeated or appear non-accidental
- Changes in eating or sleeping habits
- Increased isolation from friends or family, becoming socially withdrawn
- Changes in activity and mood
- Lowering of academic achievement
- Talking or joking about self-harm or suicide
- Abusing drugs or alcohol
- Expressing feelings of failure, uselessness or loss of hope
- Changes in clothing – e.g. long sleeves in warm weather
- Secretive behaviour
- Skipping PE or getting changed secretly
- Repeated physical pain or nausea with no evident cause
- An increase in lateness or absenteeism.

4. Managing concerns

A student may choose to share a concern about themselves or a friend to any member of staff so all staff need to know how to respond appropriately to a concern shared.

If a student chooses to share a concern about their own mental health or that of a friend to a member of staff, the member of staff's response should always be calm, supportive and non-judgemental.

Staff should listen rather than advise and our first thoughts should be of the student's emotional and physical safety rather than of exploring 'Why?'.

All concerns should be logged onto CPOMS for a DDSL to action and if the concern is urgent, staff should also speak to a DDSL. This written record should:

- Be factual - opinions or assumptions have no place within safeguarding documentation.
- Use the words the child does, including swear words or words which are explicit.
- Provide the full account of the experience which formed your concern.
- Include any response or action you took and how the child responded to you.
- Dates, times, places and names/people are very helpful for the work a DSL will do.
- Upload pictures or screenshots of work/evidence which supports your referral.

5. Confidentiality

We can never promise confidentiality if there is a risk of harm to the student. If it is necessary for us to pass on our concerns about a student, then we should discuss with the student:

- Who we are going to talk to
- What we are going to tell them
- Why we need to tell them

Parents must always be informed if a concern has been highlighted and students may choose to tell their parents themselves. If this is the case, the student should be given 24 hours to share this information before the school contacts parents. We should always give students the option of informing parents for them or with them.

If a child gives us reason to believe that there may be underlying child protection issues, parents should not be informed, but the DSL on duty must be informed immediately.

6. Individual Risk Reduction Plans

It is helpful to draw up a risk reduction plan for students who receive a diagnosis pertaining to their mental health. This should be drawn up involving the student, parents and relevant health professionals. This can include:

- The reason for the risk reduction plan
- Strategies or precautions to avoid or manage specific triggers
- Risk assessment on the identified risks
- Actions in school to minimise the risks
- Timescales - start of the plan and review dates

Where a risk reduction plan is appropriate, this will be led by a DDSL and managed by Mrs Clements (Lead DSL). Specific practical subjects may need to produce an individual risk assessment to support a student in accessing their subject area safely where appropriate.

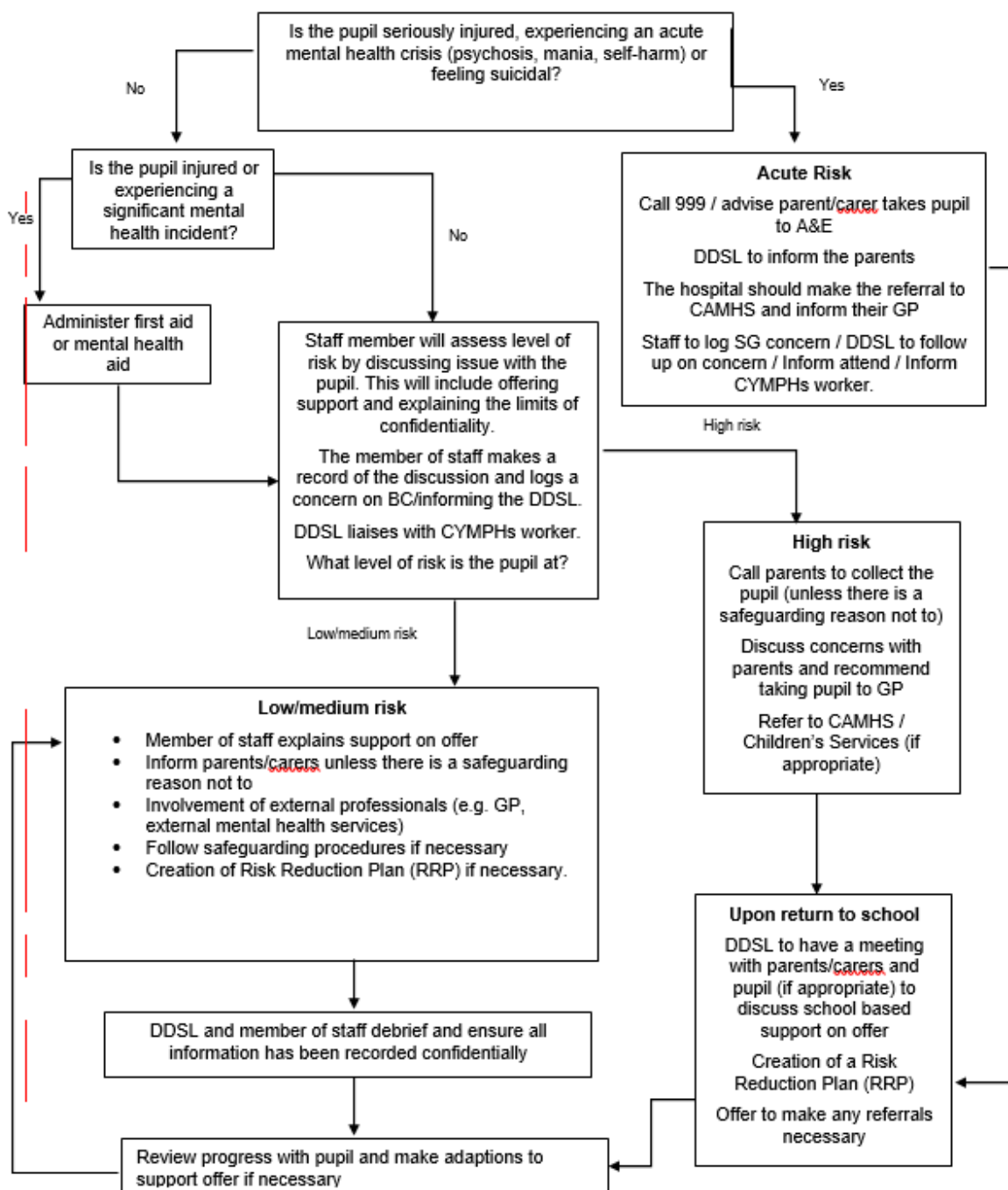
7. Signposting

We will ensure that staff, students and parents are aware of sources of support within school and in the local community. What support is available within our school and local community, who it is aimed at and how to access it is outlined in appendix A.

We will display relevant sources of support in communal areas such as year team offices, corridors and safe spaces and will regularly highlight sources of support to students within relevant parts of the curriculum and assemblies. Whenever we highlight sources of support, we will increase the chance of student help-seeking by ensuring students understand:

- What help is available
- Who it is aimed at
- How to access it
- Why to access it
- What is likely to happen next.

DDSLs will follow the procedure in a case of acute mental health crisis:



8. In house Mental Health and Wellbeing support and interventions

There is a range of in house support which Meopham School provides to students in need, this includes:

- Preventative self help support
- In house risk reduction plans / subject risk assessments
- Counselling services - In school counselling / External counselling
- Online counselling - including Alumina self- harm support
- Self-harm support
- Drugs and alcohol
- Bereavement
- LGBTQ+
- Sixth Form Support

Students will be referred to this support via a member of the safeguarding team if a concern is highlighted and the pupil / parent or carer consents.

9. Working with Parents/Carers

We aim to support parents as much as possible. This means keeping them informed about their child and offering our support at all times. To support parents we will:

- Highlight sources of information and support about mental health and emotional wellbeing that we have in our school.
- Share and allow parents to access further support.
- Ensure that parents are aware of who to talk to if they have any concerns about their child, provided students give consent.
- Give parents guidance about how they can support their child's/children's positive mental health.
- Ensure this policy is easily accessible to parents.
- Hold parent forums on mental health.
- Keep parents informed about the mental health training our school staff receive and how mental health is covered in our school curriculum.

Before disclosing to parents we should consider the following questions (on a case by case basis):

- Can the meeting happen face to face? This is preferable.
- Where should the meeting happen? At school, at their home or somewhere neutral?
- Who should be present? Consider parents, the student, other members of staff.
- What are the aims of the meeting?
- Does the student give consent for the parents to be informed of any involvement with supportive agencies?

The school will highlight further sources of information that may be helpful and provide clear means of contacting us. We will finish each meeting with agreed next steps and always keep a brief record of the meeting on the child's confidential record.

10. Working with other Agencies

As part of our whole school approach, we will also work with other agencies to support our students' emotional health and wellbeing. This might include liaising with:

- Paediatricians
- CAMHS
- Counselling services
- Therapists
- Family support workers
- Behavioural support workers

11. Supporting Peers

When a student is suffering from mental health issues, it can be a difficult time for their peers. Peers often want to support but do not know how to access it. In the case of self-harm or eating disorders, it is possible that peers may learn unhealthy coping mechanisms from each other. In order to keep peers safe, we will consider on a case by case basis which peers may need additional support. Support will be provided either in one to one or group settings and will be guided by conversations with the student who is suffering and their parents with whom we will discuss:

- What it is helpful for friends to know and what they should not be told
- How friends can best support
- Things friends should avoid doing or saying which may inadvertently cause upset
- Warning signs that their friend may need help (e.g. signs of relapse)

Additionally, we will want to highlight with peers:

- Where and how to access support for themselves
- Safe sources of further information about their friend's condition
- Healthy ways of coping with the difficult emotions they may be feeling.

12. Training


All staff receive regular training about recognising and responding to mental health issues as part of their regular safeguarding training to enable them to keep students safe.

Training opportunities for staff who require more in depth knowledge will be considered as part of our performance management process and additional CPD will be supported throughout the year where it becomes appropriate due developing situations with one or more students.

13. Policy Review

This policy will be reviewed every year. This is so that it remains up to date, useful, and relevant. We will also regularly review it in accordance with local and national policy changes.

Appendix A

| Mental health support we can offer our students | |
|---|--|
| Preventative self-help support | <ul style="list-style-type: none"> ● Online Well-Being booklet -  MSS Student Wellbeing Booklet ● Calm Club: This is a safe place for vulnerable pupils at lunchtime. For students to attend. ● Pastoral intervention - referral can be made via your Head of Year. ● SEND Interventions - referral can be made via school SENCO. ● STEM4: www.stem4.org.uk This supports young people's mental health with info about anxiety, low mood, self-harm, eating problems and addiction, as well as resilience and wellbeing, and some great downloadable apps. ● NHS Emotional Wellbeing Team - referral can be made via the safeguarding team |
| Counselling | <ul style="list-style-type: none"> ● Children and Young People's Counselling Service: Pupils can access one to one counselling through the NHS. Children and Young People's Counselling Service - Kent family ● School Counsellor -We have <u>one counsellor</u> that comes into school two days a week - Referral can be made via Mrs Jarvis (Senior Safeguarding Officer) ● Elliot Holmes Foundation - Funding and direct access to Mental Health Counselling for Young People in Gravesham. https://www.ehmf.org.uk/ |
| Online Counselling | <ul style="list-style-type: none"> ● You Are Not Alone (YANA) Project offers online wellbeing and emotional resilience workshops (tailored 1:1s, parent workshops) https://www.imago.community/Children-and-Young-People/YANA ● Kooth is an online mental health service that is free for pupils to access. https://kooth.com/ ● Childline offer 1 -1 counsellor support https://www.childline.org.uk/get-support/1-2-1-counsellor-chat/ ● Big White Wall can also offer counselling for mental health and well-being support https://www.bigwhitewall.co.uk/ ● Young minds can also offer guidance and support https://youngminds.org.uk/ |
| Alcohol / drugs support | <ul style="list-style-type: none"> ● FRANK: Information / support about drugs and alcohol signpost pupils to FRANK: www.talktofrank.com / 0300 123 6600 (24 hours a day 7 days a week). Text a question to 82111 and FRANK will text you back. Email: frank@talktofrank.com ● We are with you: Get free, confidential support with alcohol, drugs or mental health from one of our local services or online. https://www.wearewithyou.org.uk/ |
| Eating Disorders | <ul style="list-style-type: none"> ● BEAT: Charity to support young people and their families with eating disorders - helplines, chat rooms and resources: https://www.beateatingdisorders.org.uk/ |

| | |
|---|--|
| Financial Support for Families | <ul style="list-style-type: none"> The links to the charities below can help families with the cost of living, including school uniform and equipment: https://www.inkinddirect.org/with-charitable-organisations https://www.svp.org.uk Foodbanks / food vouchers: https://www.trusselltrust.org/get-help/find-a-foodbank/swale/ |
| Young Carers | <ul style="list-style-type: none"> Support for Young Carers: https://www.imago.community/ Beccy Goddard - Young Carer YYP Team Leader (IMAGO) beccy.goddard@imago.community Sophie Tibbles - Sibling Support Coordinator (IMAGO) - offers 1 to 1 support for YC. T: 0300 111 1110 M: 07739036602 sophie.tibbles@imago.community |
| Bereavement Services | <ul style="list-style-type: none"> Winston's wish: www.winstonswish.org.uk - A national bereavement support service, offering practical support and guidance for children, young people and families after the death of a parent or sibling. Free helpline: 08088 020 021. Holding on Letting Go: https://holdingonlettinggo.org.uk/ supporting bereaved children and their families in Kent. CHUMS: Mental health and emotional wellbeing support for children, young people and their families https://chums.uk.com/ |
| Self – harm / suicidal thoughts support | <ul style="list-style-type: none"> School Health: referral online supports pupils with emotional health and wellbeing: https://www.kentcht.nhs.uk/service/school-health/ Alumina: is online support for self –harm and students can get free advice and support. Staff can also refer a pupil to Alumina: https://selfharm.co.uk/alumina CALM HARM: Supportive app for self - harm: https://calmharm.co.uk/ Papryus: is a confidential advice and support for pupils struggling with suicidal thoughts: Phone: 0800 068 4141 / Text: 07786209697. YoungMinds: support young people with their mental health / Parents helpline and webchat: https://www.youngminds.org.uk/ SHOUT: provides free 24/7 support for young people experiencing a mental health crisis: Text YM to 85258. Childline: free 1-2-1 counsellor chat and email support service: 0800 11 11 (open 24/7) NHS Urgent Mental Health Helpline: Offers support and advice from a mental health professional (online) https://www.nhs.uk/service-search/mental-health/find-an-urgent-mental-health-helpline Samaritans: is a listening service - they do not offer advice and support: https://www.samaritans.org/how-we-can-help/contact-samaritan/ |
| LGBT+ | <ul style="list-style-type: none"> The Be You Project: offers support for LGBT+ community in Kent and Swale. https://thebeyouproject.co.uk/ Mermaids: www.mermaidsuk.org.uk Supports gender diverse young people and their families, with lots of blogs, online chat support, |

| | |
|-------------------------------------|--|
| | <p>support forums, a free helpline and lots of other useful information. Phone: 0808 801 0400.</p> |
| Resources | <ul style="list-style-type: none"> • Mind and HeadStart: have some really good resources and guides to mental health issues. https://www.mind.org.uk/ or http://www.headstartkent.org.uk/ • Anna Freud: centre also has some useful info and contacts: https://www.annafreud.org/ • Youth Mental Health Support Charity, Ellie's Angels: https://www.elliesangels.org/ |
| Sixth Form Support | <ul style="list-style-type: none"> • The Mix: https://www.themix.org.uk/ Helps 16-25 year olds take on any challenges, including disability, leaving care, money and racism. Includes 1-2-1 chat online and a free helpline, apps, useful info, discussion board and 24/7 crisis support. Phone: 0808 808 4994. • Survivors of Bereavement by Suicide (SOBS): Support for over 18 who have lost someone to suicide. 0300 111 5065 / email.support@uksobs.org • Withyou: Offers drug and alcohol support: 01795 500881 https://www.wearewithyou.org.uk/services/kent-for-young-people/ • FRONT DOOR: DSL's use the front door portal for early help and social services as usual: 03000 41 61 61 https://www.kent.gov.uk/social-care-and-health/care-and-support/how-to-get-adult-social-care-support |
| Safeguarding concerns and referrals | <ul style="list-style-type: none"> • FRONT DOOR: REFERRALS DSL's use the front door portal for early help and social services as usual: https://www.kelsi.org.uk/special-education-needs/integrated-childrens-services/front-door Contact number: 03000 41 11 11 Email: frontdoor@kent.gov.uk Out of Hours Tel: 03000 41 91 91 • (CYPMHS) Children and Young People's Mental Health Service: Single Point of Access (SPA) referral link: https://apps.nelft.nhs.uk/SPA-KentMedway-Support Contact number: 0800 011 3474 Email: nem-tr.kentchildrenandyoungpeoplehealthservices@nhs.net |