

Meopham School

Tenacity • Respect • Unity • Excellence



Welcome

Welcome. At Meopham School, we know there is nothing more important to you than your child's happiness and your child's future. That's why we take the great responsibility of caring for our students and shaping their education incredibly seriously.

Meopham School is a warm and inclusive community, set in a beautiful rural setting in the **historic village of Meopham**. Our picturesque and inspiring location offers students a truly unique opportunity to be educated and inspired around the beauty of nature and village life.

It is an incredibly exciting time to join Meopham School. Our new £9 million building was opened in April last year and our new **Cultural Capital Pledge** is a guarantee that every one of our students will benefit from a wide-ranging enrichment programme that will motivate, inspire and broaden horizons. Moreover, our **Grammar Stream Pathway** offers 30 students each year to benefit from an advanced curriculum, bespoke trips and visits and a flightpath to Russell Group universities.

Students thrive when there are high standards and expectations in every aspect of school life, whether that be the quality of the lessons, the calibre of the staff or the conduct of the students. We have four very simple expectations of everyone within our school community.

Tenacity: try your hardest. **Respect:** respect comes first - always. **Unity:** always be ready to help. **Excellence:** make the right choices.

Our role as educators is to show care and compassion to every student, including providing clear and supportive boundaries so that everyone can thrive. We have no qualms about having the highest of standards for everyone at Meopham - because your children are worth it.

Selecting a secondary school for your child is a very important decision and one that you should rightly take a lot of time and thought to consider. The best thing you can do is get out and see schools for yourselves. I warmly welcome you to come and see our school in action at our **Open Evening**. I am confident you will see a school with high ambitions for its students, passionate teachers delivering an exciting curriculum and an expansive enrichment offer that develops every child into the amazing young person we know they are capable of becoming.

All the best,



Mr Roberts
Headteacher



Meopham School Vision

At Meopham School, we are united in our vision to create an exciting future for every individual, by instilling a culture of respect, tenacity and excellence that improves the lives of all those within our school community.

'Leaders have high aspirations for pupils and make sure that all experience effective teaching.' (Ofsted 2023)





Meopham School TRUE Values

Meopham School

Tenacity, Respect, Unity, Excellence

Tenacity - we do not give up when things get tough. We know that sometimes in life we face challenges and we recognise that these challenges are opportunities for growth. When life knocks us down, we pick ourselves up, we dust ourselves off and we try again. We believe in a bright future and that we create our own destinies. We don't expect things to be handed to us on a plate. It is our life and our responsibility to shape it in the way we want.

Respect - we demonstrate respect in all we do. We are respectful and courteous to everyone we meet. This is a non-negotiable. We celebrate our differences and champion our diversity. We have the greatest respect for ourselves, for others and for our surroundings.

Unity - as a school, we work for each other: we share in our successes; we support each other through challenges and we are all jointly responsible for the community we uphold. We are proud to be active members of our local village community, making a positive contribution to life in Meopham and beyond. We help each other to grow in confidence and support each other in shaping our own paths through life.

Excellence - we strive to be the very best in all our endeavours, whether that be academically, creatively, competitively or morally - we dream big and never put limits on ourselves or others. We are encouraged to think for ourselves and demonstrate independence. We develop excellence as a habit and recognise that talent isn't enough. True excellence is only achieved through practice and effort.

Our New School Site & Local Area

Our school is situated in a beautiful, rural setting within the village of Meopham, Kent. The village itself is known for its traditional, historic character and is **surrounded by countryside**, offering a tranquil environment. The school's location provides students with the benefits of both a rural setting and the advantages of being close to transport links and bigger towns, such as Gravesend.

Our school's new £9 million building opened in Spring 2024. This new addition provides eight new English classrooms, a photography lab, DT and Art rooms, as well as a performing arts studio. Our Music department also received two new classrooms and a suite of practice rooms. Our original building opened in **2018 and cost in excess of £14 million to build.** All of this investment means we are lucky to enjoy outstanding facilities. A new **large car-park** and **drop-off area** was also included in the new building works, which means parents and carers can easily drop off and collect students.

The new buildings incorporate sustainable **design elements**, including Structural Insulated Panels and a focus on energy efficiency. Students have been involved in planning the landscaping around the site and we have **planted 100 trees** donated from the Woodlands Trust to help to further 'green' our site.



'I love the music practice rooms and the new DT classrooms, as they give us space to be creative and try new things'. (Student)



'Leaders have carefully constructed a curriculum that sequences the knowledge and skills that all pupils need to know, including for pupils with SEND.' (Ofsted 2023)

Our Curriculum

Building Bright Futures

At Meopham School, we have a **strong academic focus** that provides our students with a **broad and balanced curriculum**, designed to equip your child with the skills and knowledge they'll need to **thrive in a rapidly changing world**.

At the core of our curriculum are the **traditional, academic subjects** of the **English Baccalaureate**: Maths, English, Science, Modern Foreign Languages and the Humanities. Complementing this core, we have a **vibrant range of creative subjects** including Art, Drama, Music, PE, IT, Textiles, Catering and Design Technology. We believe in building strong foundations, which is why the essential core skills of **literacy, oracy, and numeracy** are woven into every subject.

But education at our school goes beyond textbooks. We're passionate about developing **strong character** alongside academic excellence. That's why our academic provision is complemented by a comprehensive **Personal Development curriculum**. This includes PSHE; Philosophy, Religion and Ethics; Citizenship and Careers Education - all designed to help your child grow into a well-rounded, responsible, tenacious individual, prepared for the future.

Our curriculum is ambitious for all. We are dedicated to providing an **excellent education** through an inclusive and challenging curriculum that sparks **creativity** and prepares students for an ever-changing world. Your child will become a **lifelong learner**, inspired by outstanding lessons from specialist teachers.

Excellence Stream

Our Grammar Provision for Able Students

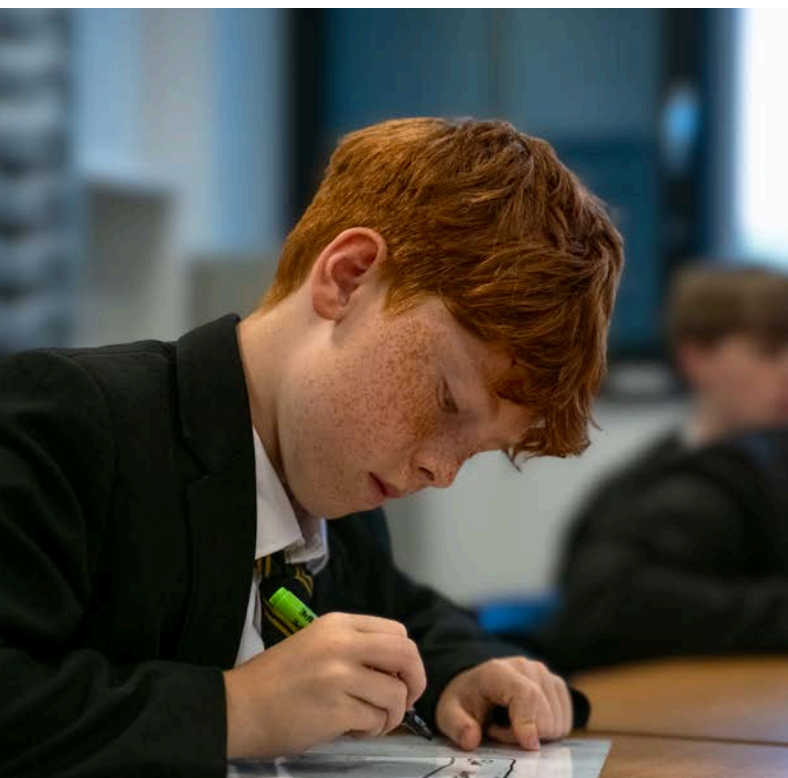
We believe in nurturing every student's unique talents and helping them reach their full potential. We're proud to offer an **Excellence Stream** designed to provide an **enriched and accelerated curriculum** for students who demonstrate **strong academic aptitude**.

As part of the Excellence Stream, students will:

- Benefit from an **accelerated curriculum** in the **top sets** for core subjects.
- Complete an additional course of **Rhetoric and Enterprise** during Key Stage Three - two fundamental skills required for future leadership.
- Partake in the **Scholar or STEM Pathways** during Year 9.
- Complete the **English Baccalaureate** and **Triple Science curriculum** at Key Stage Four.
- Embark upon the **Russell Group Pathway** and **EPQ** programme at Key Stage Five.
- Participate in an **additional Stretch and Challenge Trip each year**, with an **academic or career** focus.

The Excellence Pathway allows us to delve deeper into subjects, tackle more complex concepts, and truly challenge our brightest minds.

But no matter which learning path you're on, our dedicated teachers are committed to **pushing all students to succeed**. We provide a supportive and stimulating environment where everyone is encouraged to excel, explore new ideas, and achieve their personal best.





Discovering Your Passions

Year 9 Pathway: A New Approach to Options

We understand that as students grow, their interests and aspirations will too. This is why we have developed an innovative approach to our Year 9 curriculum that provides students the opportunity to **specialise** their learning by selecting two **Pathways** to complement the English Baccalaureate curriculum:

Creative: Art and Catering.

Performer: Music and Drama.

Enterprise: Information Technology and Business.

Sport and Health: Sport Studies and Health and Social Care.

STEM: Triple Science and Design Technology.

Scholar: a bespoke programme developing traditional academic skills.

The Pathways programme allows students to explore subjects they are passionate about in greater depth, laying the groundwork for their future academic and career ambitions. This continues into **Year 9**, when students select their **GCSE option choices**. Our curriculum offers a fantastic opportunity for each student to shape their learning journey, selecting subjects that align with their strengths, passions and future goals.

'They treat our child as an individual, helping and encouraging him as he progresses on his learning journey.' (Parent)

Where Ambition Meets Achievement: Our Commitment to Excellence

At Meopham School we have the **highest aspirations** for every student. This is the driving force behind **consistently strong outcomes**, achieved year after year.

Our thriving Sixth Form saw continued improvement in outcomes in Summer 2025. Whether pursuing A-levels or Vocational courses, our students excelled, with a fantastic **100% of students who applied to University gaining their first choice place**. We also saw many students progress on to high level apprenticeships and employment opportunities. This reflects not just academic success, but the well-rounded individuals we help them to become, ready for the next chapter.

At GCSE, Meopham School is proud to be recognised as the **top-performing school within Swale Academies Trust**. Our students don't just pass; they make **significant progress** from their individual starting points. We take particular pride in the fact that our **core subjects of English, Maths, and Science** are among our strongest performers – ensuring a solid foundation for every student's future. **Meopham students consistently attain above national average for Standard Passes in English and Maths.**

- **English: 73% of our students achieved Grade 4+, with 51% achieving Grade 5+.**
- **Maths: 72% of our students achieved Grade 4+, with 54% achieving Grade 5+.**
- **English & Maths Combined: An impressive 66% of our students secured Grade 4+ in both subjects, with 44% achieving Grade 5+ in both.**

These results aren't merely statistics; they are a clear indication of our commitment to fostering an environment where every student is challenged, supported, and ultimately, succeeds.



'My daughter has a brilliant rapport with all teachers at the school. This is a great contribution to her achieving above her targets. Thank you!' (Parent)

Our Teaching & Learning Vision

Our approach to teaching and learning is **evidence-informed** and focused on **consistency**, while also giving teachers the freedom to **personalise learning** for each class.

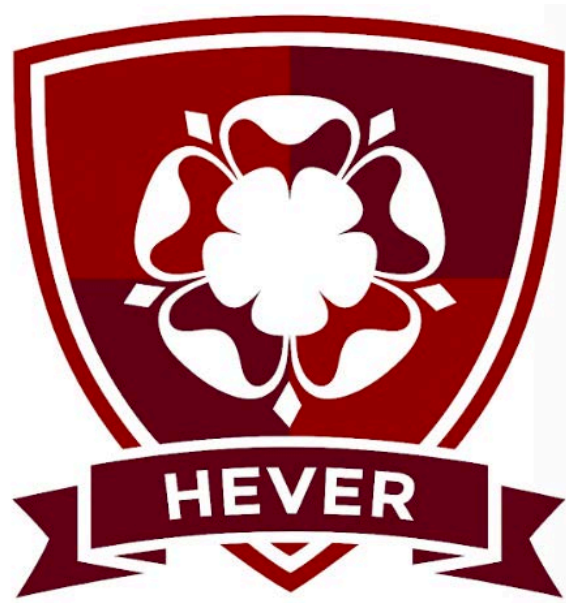
Our Key Principles are aspects of Teaching and Learning we expect to see in every lesson:

- **Tailored Retrieval:** Regularly revisiting topics to strengthen memory and understanding.
- **Pace and Purpose:** Designing activities that are challenging and focused on explicit learning objectives.
- **Student-Led Learning:** Empowering students to practice independently and apply their thinking.
- **All-Access, High-Challenge:** Ensuring all lessons promote higher-order thinking with the right support for every student.
- **AfL for All (Assessment for Learning):** Skillful questioning and regular checks to understand student progress and adapt teaching.
- **Feedback that Feeds Forward:** Providing timely, diagnostic feedback to foster continuous progress and make students lifelong learners.
- **Rigorous Routines:** Creating a structured and predictable environment to maximise learning time.
- **Life-LONG Skills:** Consistently developing Literacy, Oracy, Numeracy, and Grammar across all subjects.
- **RAPID Progress Home Learning:** Setting meaningful home tasks that reinforce learning and accelerate progress.



Our School Houses

At Meopham School, we have four houses named after **historic castles in Kent**. Each castle has links to our TRUE values. All students and staff are assigned to a House and engage in **inter-House competitions** throughout the year. Students are awarded **House points** for demonstrating our TRUE values throughout school life, as well as for competing in inter-House events, taking on Student Leadership roles and engaging in our Cultural Capital enrichment programme. House points are collated at the end of each term and at the end of each academic year one House is crowned **House Champions** and awarded the **House Cup**.



'I like earning points for our TRUE values because my mum gets an alert to tell her what I've done well at school.' (Student)

Our Cultural Capital Pledge

Meopham School is committed to its Cultural Capital Pledge - an innovative approach to student enrichment, which guarantees a broad provision for every student.

All students at Meopham School will be provided the opportunity to:

- Partake in learning that exposes them to the essential knowledge needed to become an educated citizen, and introduces them to **the best that has been thought and said**.
- Take part in a broad range of **extra-curricular clubs** and activities.
- Learn how to play a **musical instrument**.
- Take on one - or multiple - **Student Leadership** positions, with a formal application process, mirroring real life job applications.
- **Represent the school** in a sporting, cultural, or academic event.
- **Represent their House** in a variety of **inter-House competitions** and events.
- Participate in a **residential trip** (both in the **UK** and **abroad**).
- Attend a variety of **talks** and **visits** from **experts** in a variety of fields.
- Attend a **national sporting, academic, or cultural** event.
- Take part in a **production** or an event (back or front stage).
- Contribute to the **sustainability** of the school.
- Collaborate and publish in the **school magazine**.
- Visit a **museum/place of historical interest**.
- Visit a **theatre/art gallery**.
- Enter **creative writing, poetry** and **art** competitions.
- Contribute to raising money for a **charity** or a **community** project.
- Attend a **careers fair**.
- Engage in a **mock interview** programme.
- Take part in **Work Experience** in Year 9, Year 10 and Year 12.
- Participate in **Post-16 talks and visits** for Apprenticeships, Further and Higher Education that link to a broad range of careers.



Enrichment

At Meopham School, we believe that education goes far beyond the classroom. Our **extensive enrichment programme** plays a vital role in developing well-rounded, confident, and tenacious young people who are equipped for life beyond school.

We offer a wide range of extra-curricular opportunities, including lunchtime and after-school clubs, trips and visits, sport competitions and inter-House competitions that span many subjects. Whether it's **sport, creative arts, STEM, languages, hobbies or leadership activities** students are interested in, there is something for everyone.

In addition to our enrichment clubs, our **inter-House competitions** and events provide students with the chance to take part in friendly rivalry, teamwork, and school spirit. These events provide students the opportunity to compete in teams that span all year groups, uniting our school community and celebrating student talent and enthusiasm.

As part of **Swale Academies Trust**, our students also benefit from taking part in exciting **trust-wide events across Kent and Sussex**. These include **SwaleStock**, our inter-school music festival; **SwaleFeast**, the prestigious catering competition where we are the reigning champions and **Swale Dance Fest**, which showcases the incredible performing arts talent across our schools.

We actively encourage every student to take part in at least one regular enrichment activity, knowing that these experiences are key to building character and preparing for future personal and professional success. Students also receive **House points** to recognise their commitment to enrichment programmes!

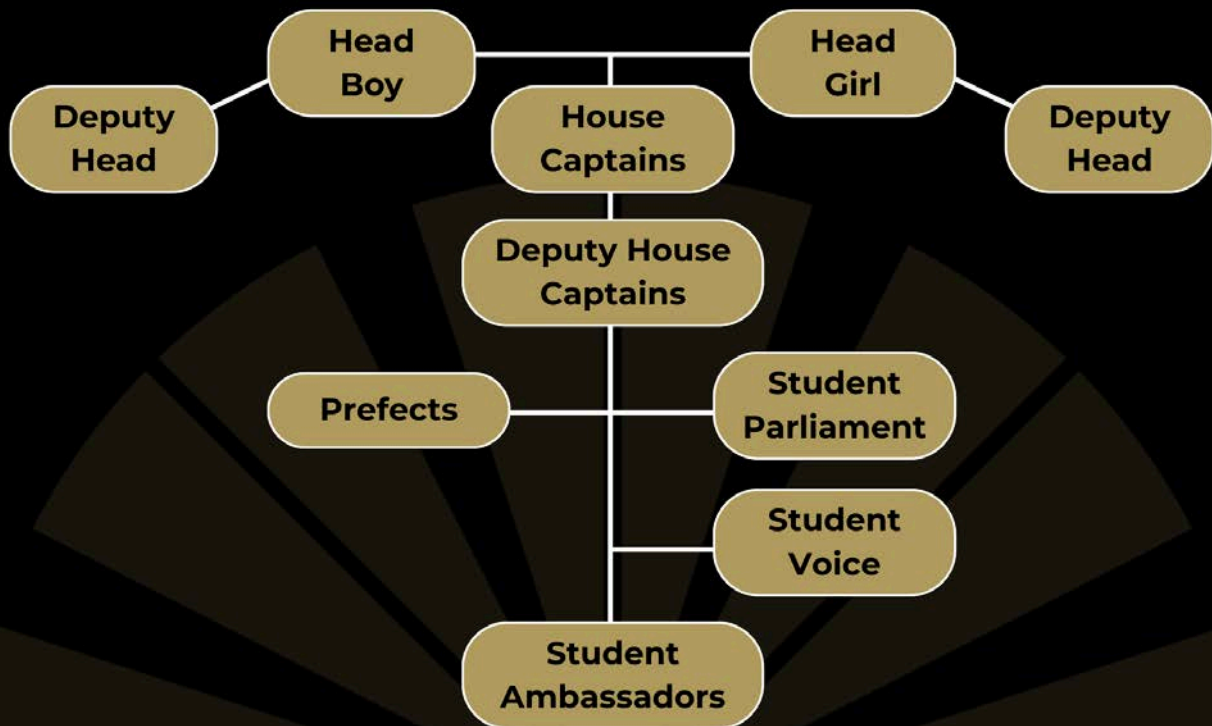




'Being in a performance kick started my ambition to be a dancer.' (Student)
'I gained so much confidence from it.' (Student)



Student Leadership Structure



Student Leadership

At Meopham School, we believe that every student has the potential to lead, inspire and contribute positively to the wider school community.

Our range of Student Leadership opportunities reflect this commitment and play a vital role in shaping our inclusive school culture. Students can get involved through various roles such as **Student Parliament**, an elected role which gives students a real voice in school decisions, and **Student Voice**, where all students are encouraged to share ideas and feedback.

Our **Student Ambassadors** represent a range of important areas within the school such as Wellbeing, Literacy, Attendance, and Anti-bullying. **Prefects** help to uphold our school values and act as role models across all year groups, while our **House Captains** and **Deputy House Captains** support our House system by promoting teamwork and healthy competition.

Leadership continues through to our Sixth Form where our **Head Boy, Head Girl** and **Deputy Head Students** take on important responsibilities linking to our TRUE values. We encourage all students to get involved with these roles. By engaging with our Student Leadership program, students will not only have a positive impact on our school community, but they will also develop their own skills in communication, teamwork and overall confidence. They will also earn a “**salary**” of House points each term!



Meopham Fundamentals

At Meopham School, we believe in **traditional values** coupled with **high expectations**. Our commitment to these principles is woven into the fabric of daily school life, forming what we call our ***Meopham Fundamentals***.

We expect all students to arrive at lessons on time, ready to learn and engage. **Respect is a core value** - we insist that students show respect for one another, to their teachers and towards our shared school environment. Our uniform is more than just clothing; we expect it to be **worn smartly and with pride**, reflecting a commitment to personal standards and the school community. We want our students to be focused on their studies, and **not distracted by electronic devices** - for this reason we insist that mobile phones are switched off and not seen during the school day.

By upholding these Meopham Fundamentals, we believe our students will not only develop into **responsible and respectful young adults** who are prepared for future success - but will also have the essential self-discipline skills needed for **academic achievement**.

Student Welfare

At Meopham School we work tirelessly to ensure our students feel safe and happy. We know that when students feel confident in themselves, they are more likely to thrive.

Our Culture and Ethos team ensure that every child is well cared for and develops as an individual. All students have a **Tutor** who is the first point of contact for any pastoral or welfare issues. There is a dedicated pastoral team for each year group, which includes a **full time Pastoral Support Manager** and **Head of Year** who are supported by the school's full-time **Wellbeing Support Lead**, a **Mental Health Lead** and a **School Counsellor**. Any concerns students may have are picked up quickly and are addressed decisively. This helps our students to feel safe, seen and respected - so they are free to learn.

'Leaders have re-established clear behaviour systems to ensure that pupils behave well. This has had a demonstrably positive effect on behaviour in the school; and leaders continue to embed this practice to ensure behaviour is of a consistently high standard across the school.' - Ofsted 2023



Inclusivity

At Meopham School, we are committed to providing an **inclusive community** where every individual feels **valued, respected**, and **empowered** to thrive. Our commitment to inclusivity is to promote high expectations and aspirations for all students, to foster a **sense of belonging and independence** within our school and the wider community.

This commitment is present in every aspect of school life: from our **curriculum**, which is designed to be representative and challenge preconceptions; to our **pastoral care**, which prioritises the wellbeing of every student; to our **extracurricular activities**, which are open and accessible to all.

We are keen to work **collaboratively** with students, parents and carers, and school staff, to ensure that we are able to create an environment where students can **thrive and flourish**.



'My son feels safe and well respected by staff and students. He speaks well of staff, telling us they are friendly, helpful and supportive.' (Parent)

Sixth Form

At Meopham School, our growing Sixth Form offers more than just qualifications; it's a vibrant, **close-knit community** where every student is known, supported, and challenged to excel. Our dedicated teachers truly get to know their students, tailoring lessons to both ignite their passions and provide the individual support they need to thrive.

Our ambition for all Sixth Form students is that they go on to attend the **top-third universities in the UK** or successfully take up **high-level degree apprenticeships or employment opportunities** in London and beyond.

While academic achievement is central, enrichment is also a vital part of Sixth Form life at Meopham. We offer a wide variety of **out-of-classroom experiences** and invaluable **careers opportunities**, ensuring each young person explores their interests and discovers their potential. Our **leadership programmes** empower students to support the wider school community, fostering teamwork and shaping the student experience for everyone.

We understand that the choices made during Sixth Form have **lifelong significance**. That's why providing **high-quality information, advice, and guidance** on university, apprenticeships, and career pathways is our absolute top priority. We're here to expertly guide your child towards the best next steps for their unique future.

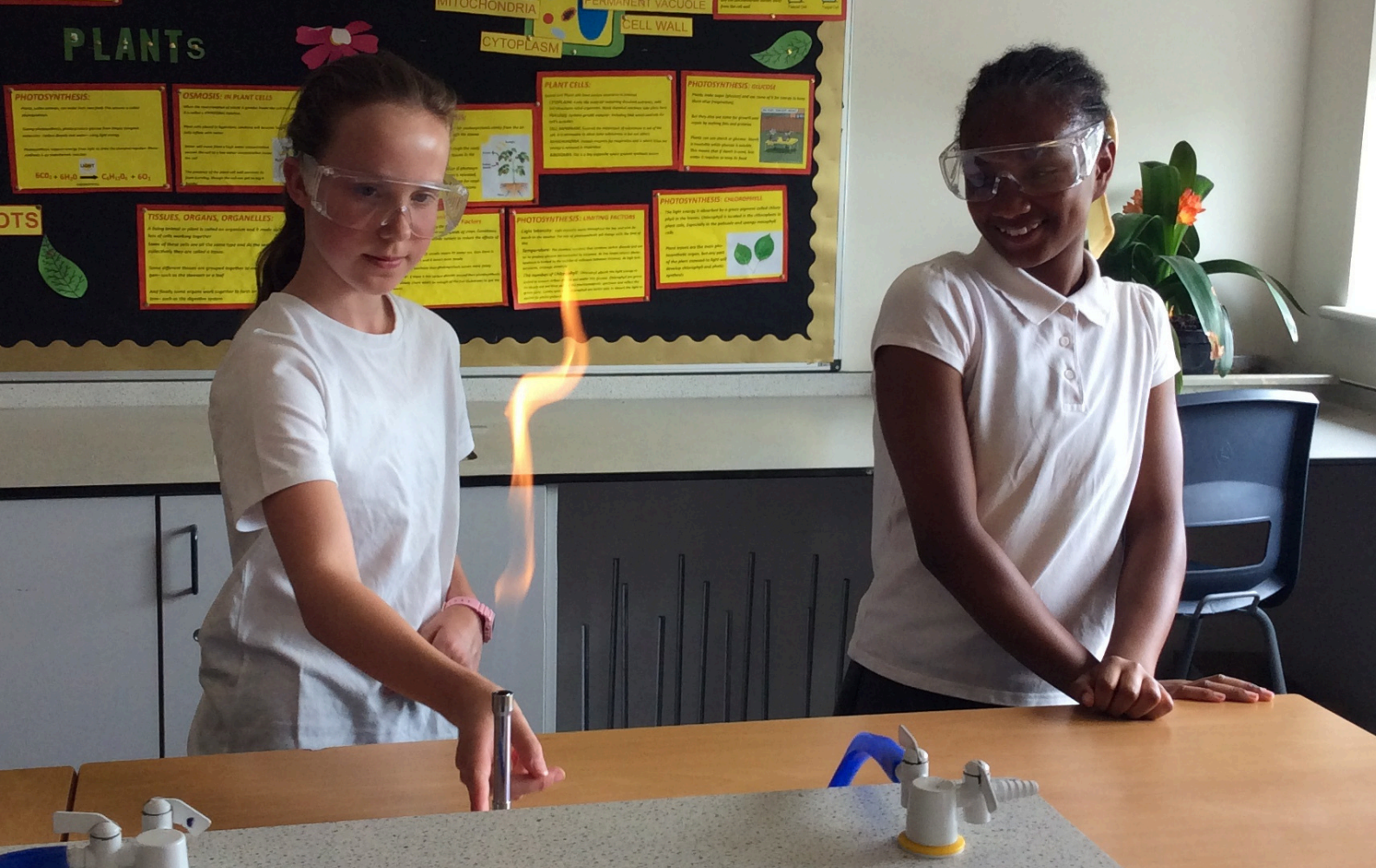
We have ambitious plans for the growth of our Sixth Form; our aim is that the majority of our Year 7 students will embark on a **seven-year learning journey** with us, culminating in a truly exceptional post-16 experience.

'Teaching at Meopham Sixth Form is a privilege. Class sizes are small and our students are completely dedicated to their studies.' (Sixth Form Teacher 2024)





'Across subjects, staff have strong subject knowledge and give clear explanations of lesson content. This was especially evident in teaching in the Sixth Form.' (Ofsted 2023)



'I really enjoyed my transition days at Meopham, the teachers are helpful and I made some new friends.' (Student)

Transition

We expect the move from primary to Meopham School to be an exciting and positive time for all of our students. Our aim is to ensure the transition into secondary school is smooth and straightforward for our new students and their families.

Before the start of the new academic year, Year 6 students are invited to join us for exciting and informative **Transition Days**. During this time, students follow a bespoke programme designed to introduce them fully to life at Meopham School. Our new cohort will experience their first Meopham lessons and begin to explore the school facilities. Students also get to meet their tutors, class teachers and Heads of Year. In order to remove as much anxiety as possible, these days will offer the chance to ask as many questions as possible and hopefully have many answered.

Finally, and perhaps most importantly, the transition period offers an opportunity to meet other students and to begin to build lasting friendships.

In term one, families are invited to our **Meet the Tutor Evening** where there is an opportunity to have a one to one discussion about how each individual child has adjusted to life at Meopham School.

Meopham School

Bus & Travel Information for Parents 2025

306/308 Redroute: Gravesend – Sevenoaks (via Vigo & Culverstone)

Free bus passes available for eligible students living in Vigo/local surrounding areas
[Kent Travel Saver](#) accepted

306/308 Redroute: Sevenoaks – Northfleet Garage (via Gravesend Station)

Morning (AM): Gravesend Station to Meopham School

Afternoon (PM): Meopham School to Gravesend Station

Operated by 1st Bus Stop M1.

[Kent Travel Saver](#) & [Kent 16+ Travel Saver](#) accepted

416 Redroute: Istead Rise – Gravesend (Thong Lane)

Runs at school times.

[Kent Travel Saver](#) & [Kent 16+ Travel Saver](#) accepted.

311 Brian Jones Coaches: Cobham / Shorne / Lower Higham

Available for areas more than 3 miles from the nearest school

[Kent Travel Saver](#) & [Kent 16+ Travel Saver](#) accepted

Funded by KCC in most cases

418 Redroute: New Ash Green / Hartley / Longfield / New Barn / Meopham / Wrotham

Public bus service

[Kent Travel Saver](#) & [Kent 16+ Travel Saver](#) accepted

TRAIN SERVICES

From Meopham: Services run from Sole Street/Strood/Rochester/Chatham towards Longfield/Farningham/Swanley. The 306/308 Redroute runs outside the station

From Gravesend: Trains come into Gravesend from the Medway Towns towards Northfleet/ Swanscombe/Greenhithe (Bluewater), Stone Crossing & Dartford. The 306/308 Redroute runs from outside the station

<https://www.kent.gov.uk/education-and-children/schools/school-transport>



KENT TRAVEL PASSES

For students in Years 7-11

Apply here:

<https://www.kent.gov.uk/education-and-children/schools/school-transport/KCC-travel-saver>

For Post16 students aged 16-19

Apply here:

<https://www.kent.gov.uk/education-and-children/schools/school-transport/16-travel-saver>

We are currently considering the prospect of providing a private school bus service from key locations within surrounding villages - as well as from key areas of Gravesend - should the demand exist.



Meopham School

Year 7 Entry September 2026

Open Evening

Thursday 25th September 2025

4.30pm - 8pm

Presentations @ 5pm, 6pm, 7pm

No booking required

Open Morning Tours

Monday 29th September - Thursday 16th
October

Open Morning tours can be booked via
[eventbrite.co.uk](https://www.eventbrite.co.uk)

£9m New Building Now Open

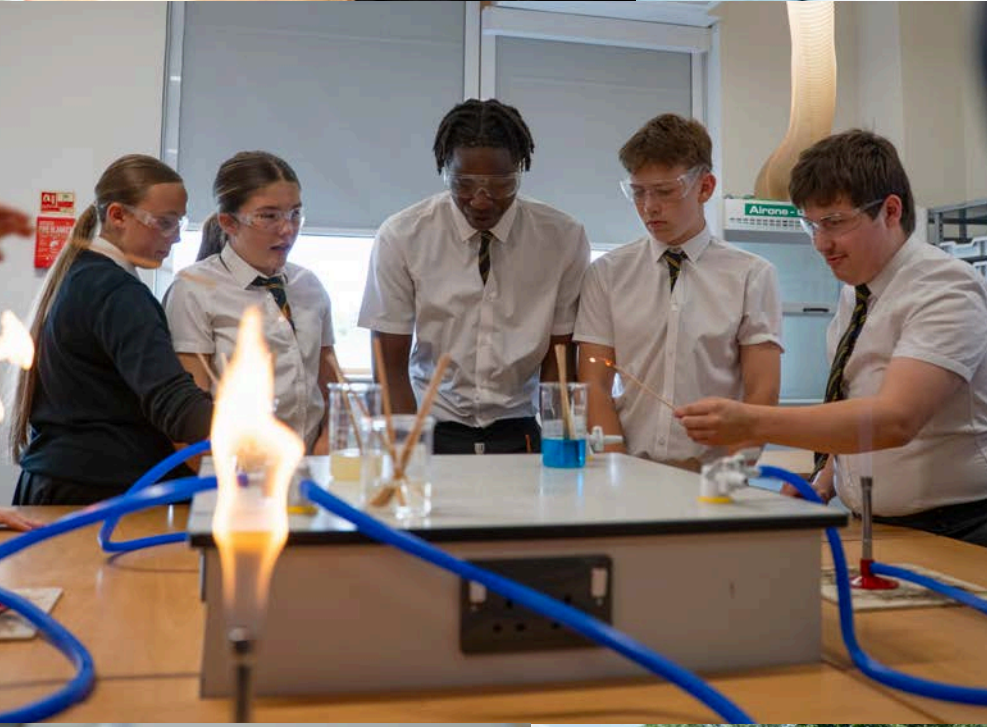
Grammar Stream available for selected students



Wrotham Road Meopham Kent DA13 0AH
01474 814 646



Scan to book Tours



'Qualifications and personality open doors initially, but it is strength of character which keeps those doors open and allows our young people to lead happy, successful and healthy lives.' (S Dickinson - Director of Secondary - Swale Academies Trust)



01474 814 646 www.meophamschool.org.uk
Wrotham Road Meopham Kent DA13 0AH

